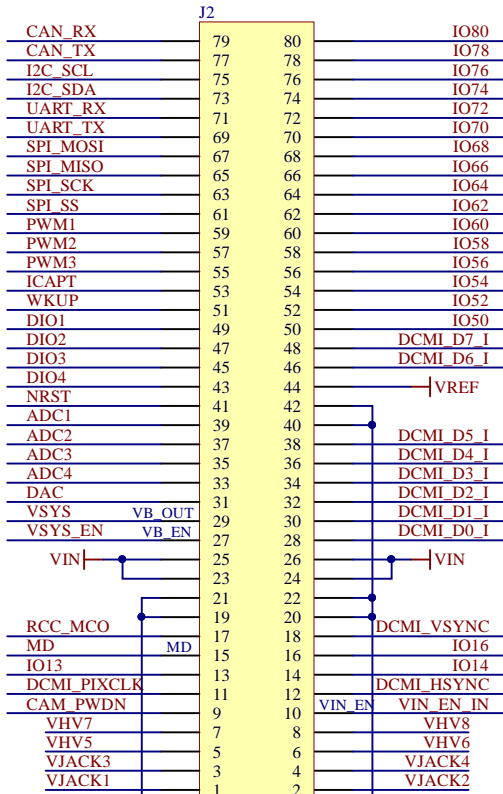
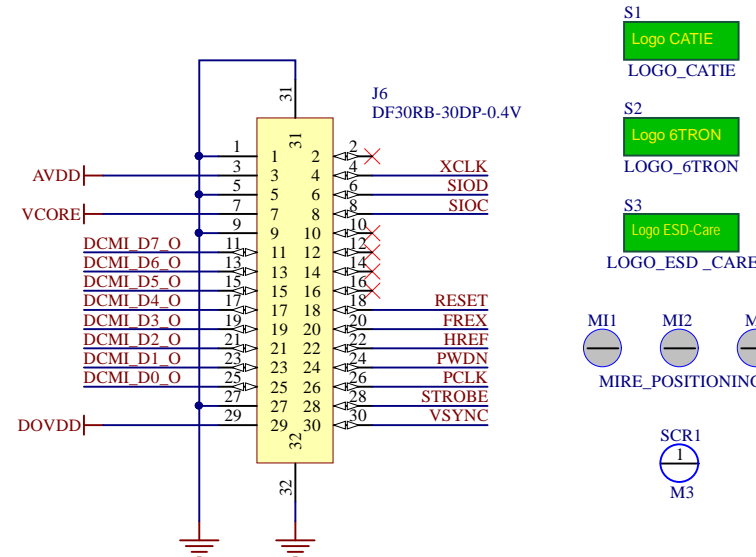


Top-mount

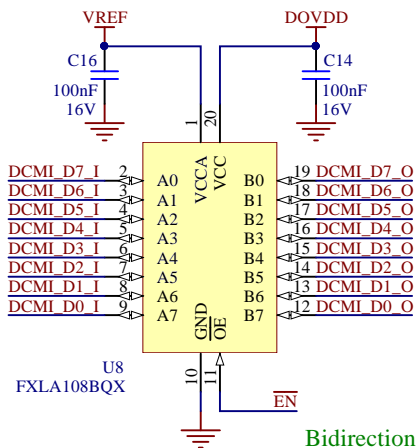


Bottom-mount

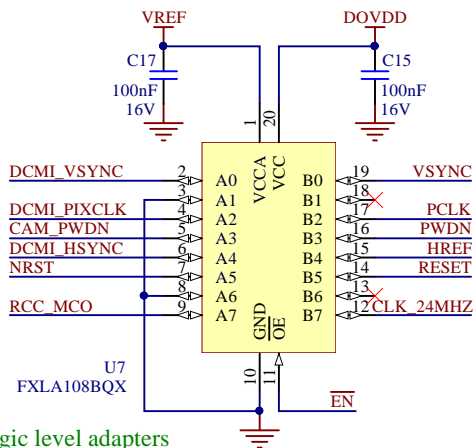
6TRON 80-pin interface headers



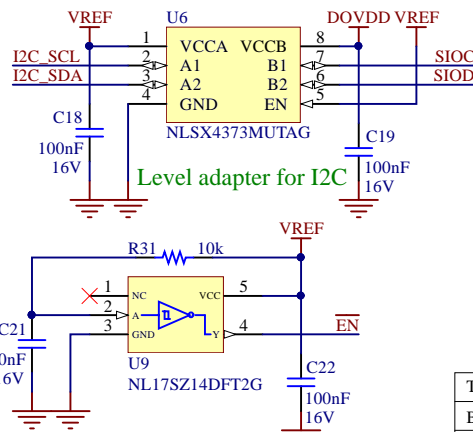
Camera flex 30-pin interface header



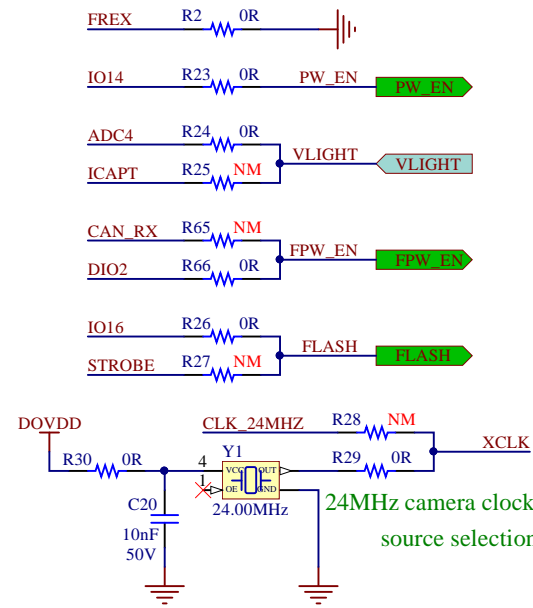
Bidirectional logic level adapters



Delay circuit for logic level adapters EN pin



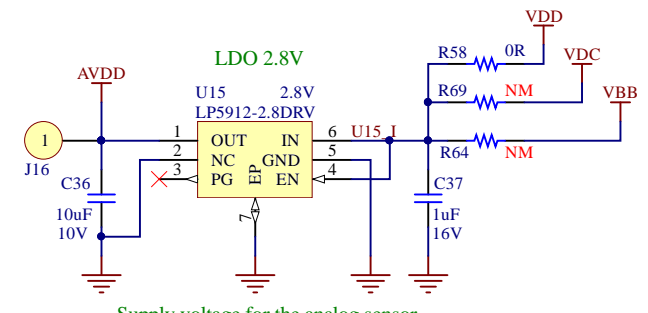
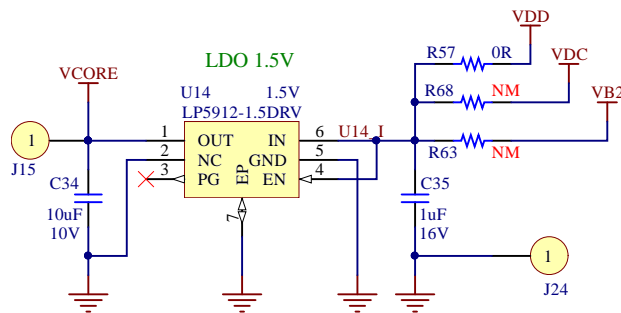
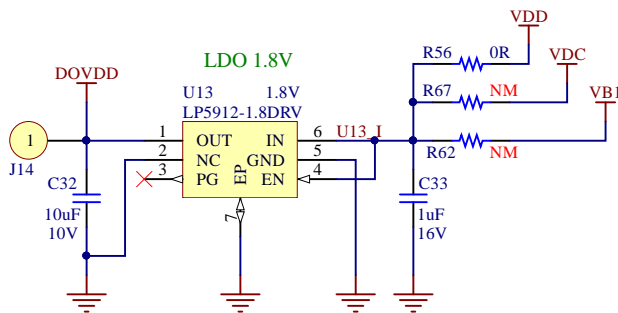
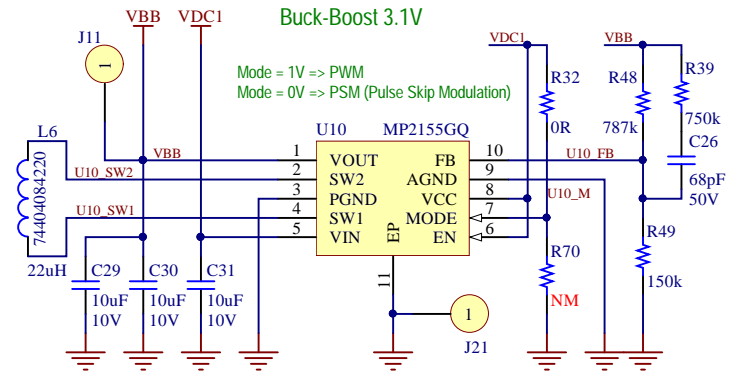
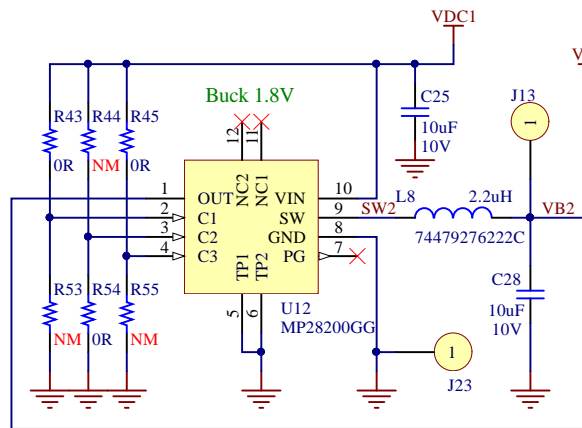
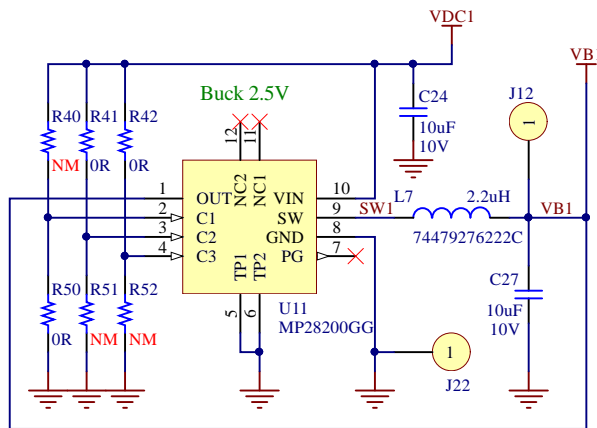
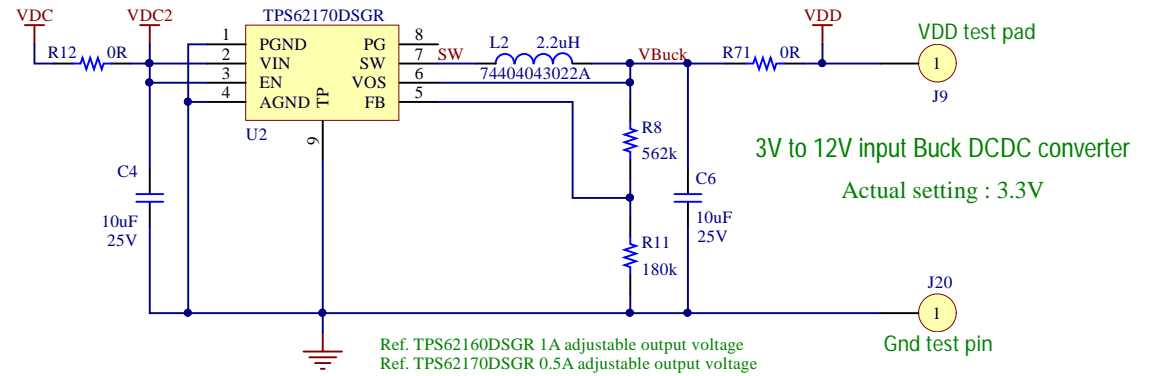
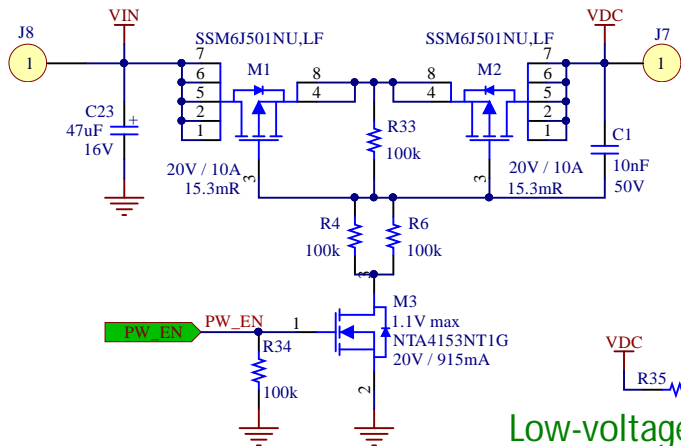
Level adapter for I2C



24MHz camera clock source selection

Title: Interface	Version: 2.1.0	 Solutions pour la société romaine
Board: Zest_Sensor_Camera	Size: A4	
Project: 6TRON	Sheet: 1 of 3	
Author: Olivier Chevalerias	Date modified: 14/01/2019	





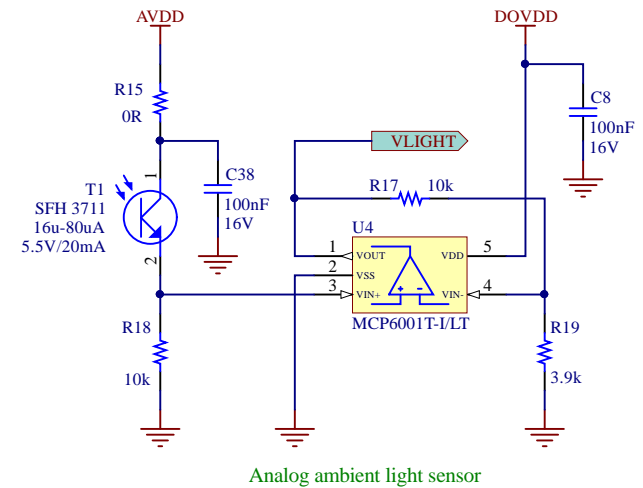
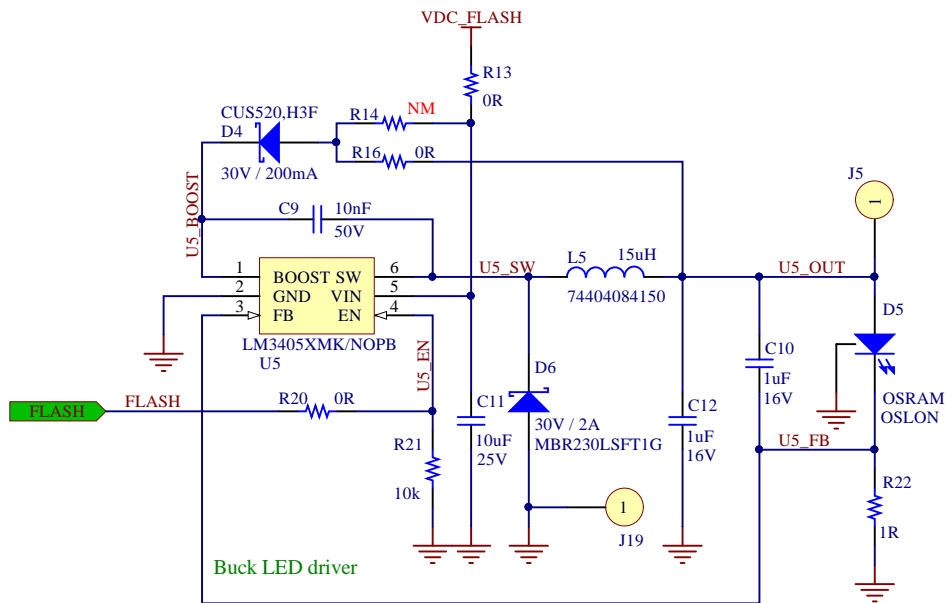
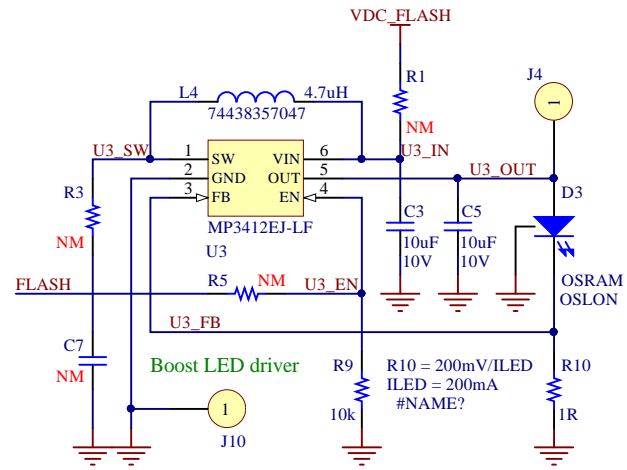
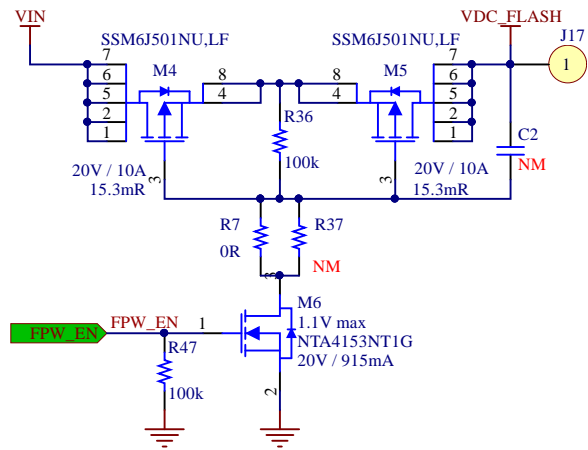
Supply voltage for the camer module GPIO

Supply voltage for the sensor core



Supply voltage for the analog sensor

Title: Camera Power Supply	Version: 2.1.0	
Board: Zest_Sensor_Camera	Size: A4	
Project: 6TRON	Sheet: 2 of 3	
Author: Olivier Chevalerias	Date modified: 14/01/2019	





R22 = 205mV/ILED
ILED = 200mA
#NAME?

Title: LED Flash Drivers	Version: 2.1.0	
Board: Zest_Sensor_Camera	Size: A4	
Project: 6TRON	Sheet: 3 of 3	
Author: Olivier Chevalerias	Date modified: 14/01/2019	
		

U11, U12 : MP28200 Buck

Table: Output voltage selection

CTRL3	CTRL2	CTRL1	VOUT
0	0	0	Disabled
0	0	1	0.8V
0	1	0	1.0V
0	1	1	1.2V
1	0	0	1.5V
1	0	1	1.8V
1	1	0	2.5V
1	1	1	3.3V

U10 : MP2155 Buck-Boost

Table: Feedback resistor selection

VOUT	R48	R49
2.8V	590k	127k
3.1V	787k	150k
3.3V	576k	102k