

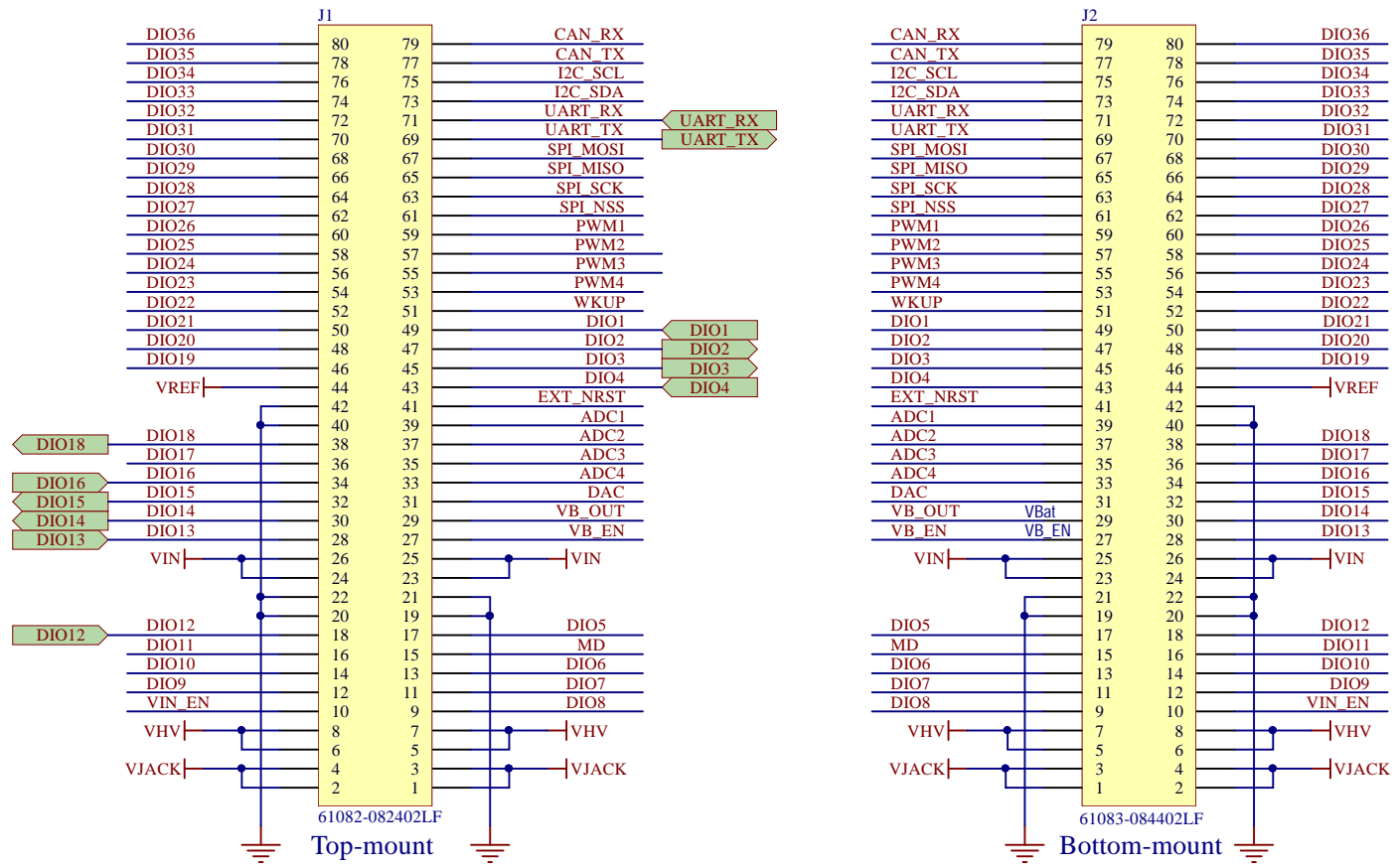


Title: <i>Block Diagram</i>	Version: <i>2.1.0</i>	 
Board: <i>Zest_Interface_RS232</i>	Size: <i>A4</i>	
Project: <i>6TRON</i>	Sheet: <i>1 of 4</i>	
Author: <i>Olivier Chevalerias</i>	Date modified: <i>14/09/2021</i>	



	R19	R20	Selection
DIN	X*		UART_TX
		X	DIO18

	R17	R18	Selection
ROUT	X*		UART_RX
		X	DIO12

	R7	R8	Selection
FORCEON			Active*
	X		DIO1
		X	DIO15

	R9	R10	Selection
FORCEOFF			Inactive*
	X		DIO2
		X	DIO16

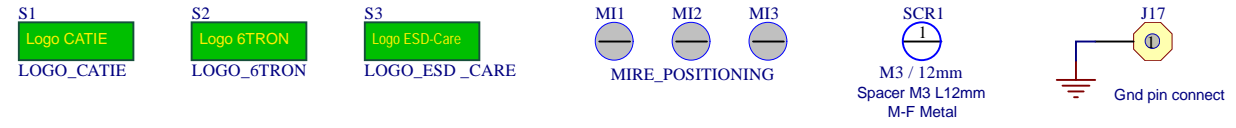
  

	R12	R14	Selection
nVALID	X*		DIO3
		X	DIO13

	R15	R16	Selection
READY	X*		DIO4
		X	DIO14

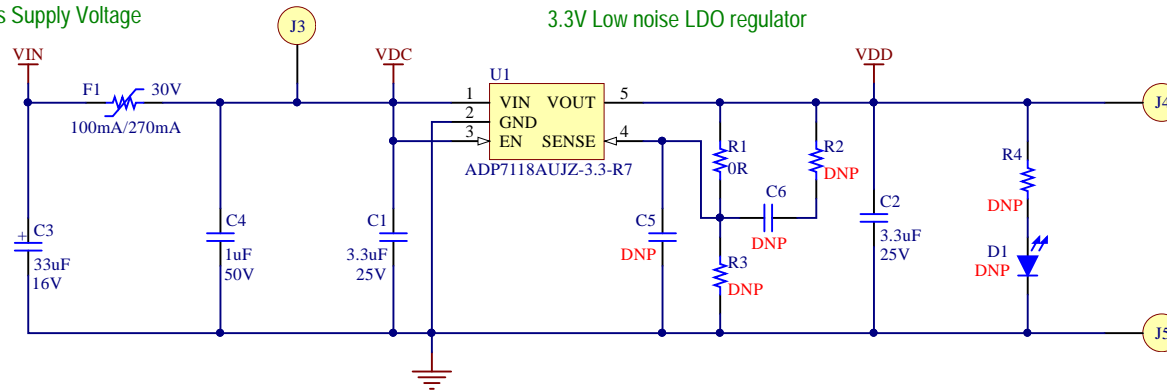
X\* : Default setting





Title: <i>Interconnect</i>	Version: 2.1.0	
Board: <i>Zest_Interface_RS232</i>	Size: A4	
Project: <i>6TRON</i>	Sheet: 2 of 4	
Author: <i>Olivier Chevalerias</i>	Date modified: 25/01/2022	

6TRON Bus Supply Voltage

3.3V Low noise LDO regulator



Title: <i>Power Supply</i>	Version: <i>2.1.0</i>	 Solutions pour la société romainque
Board: <i>Zest_Interface_RS232</i>	Size: <i>A4</i>	
Project: <i>6TRON</i>	Sheet: <i>3 of 4</i>	
Author: <i>Olivier Chevalerias</i>	Date modified: <i>16/09/2021</i>	

