

Top Overlay

Zest_Interface_RS232 v2.1.0

Board Edge

Mecanical

Nbr Layers: 4

Copper finish: 35u

Min track width/clearance: 0.20mm

Min finished hole diameter: 0.15mm

Min drilling diameter: 0.25mm

Min Annular ring: 0.125mm

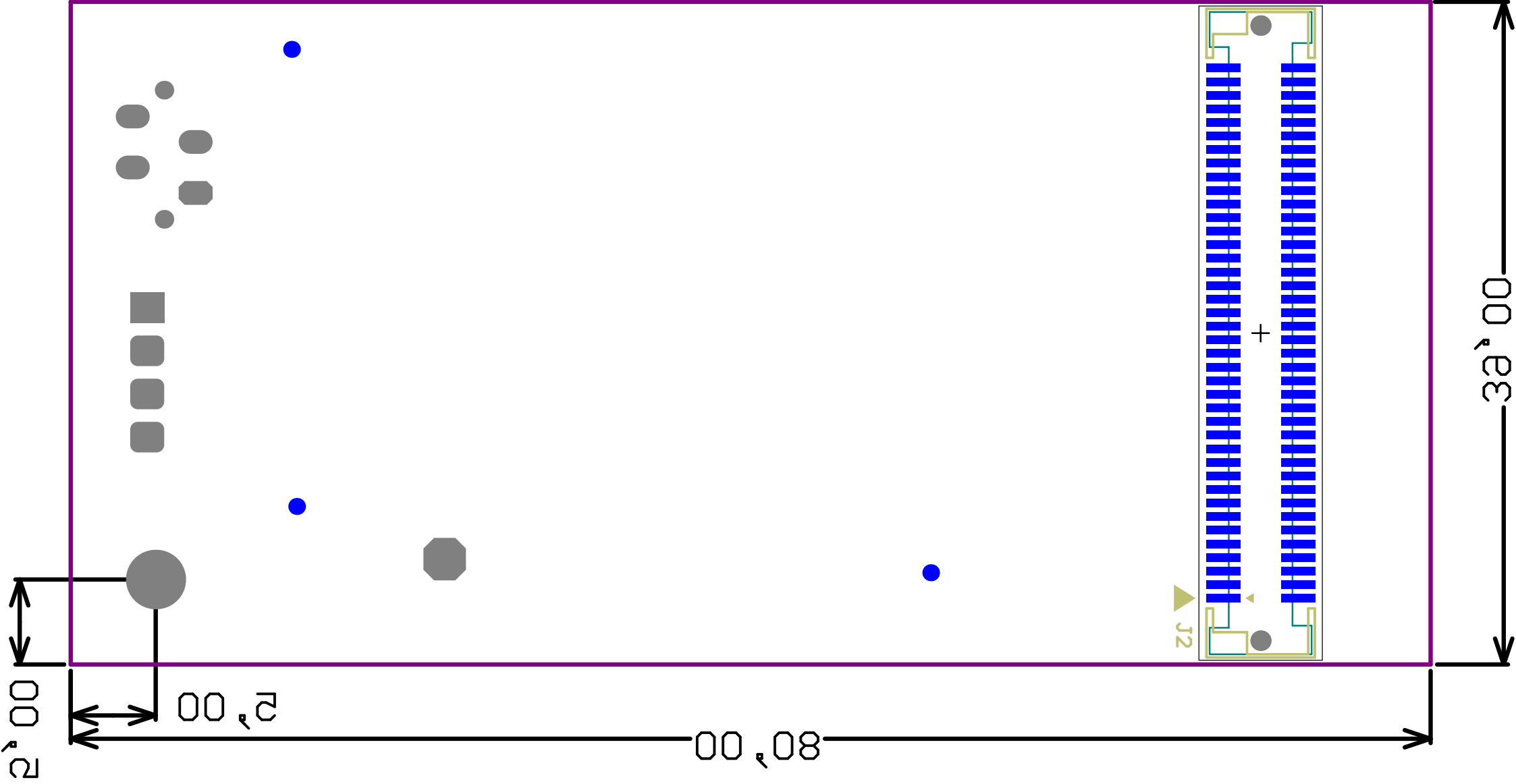
Hole density < 1000/dm²

Min milling tool diameter: 0.5mm

Soldermask: Blue

Surface finish: Ni/Au selective

Board thickness : 1.55mm



Board Edge

Zest_Interface_RS232 v2.1.0

Mechanical

Board thickness : 1.5mm
 Surface finish: NiAu selective
 Min milling tool diameter: 0.5mm
 Hole density > 1000/dm²
 Min Annular ring: 0.125mm
 Min drilling diameter: 0.25mm
 Min finished hole diameter: 0.15mm
 Min track width/clearance: 0.20mm
 Copper finish: 35u
 Nbr Layers: 4

Bottom Overlay