

Board Edge

Top Overlay Zest_Extension_SPI V1.0.0

Mecanical

Board thickness : 1.55mm

Nbr Layers: 4

Copper finish: 35u

Min track width: 0.28mm

Min finished hole diameter: 0.15mm

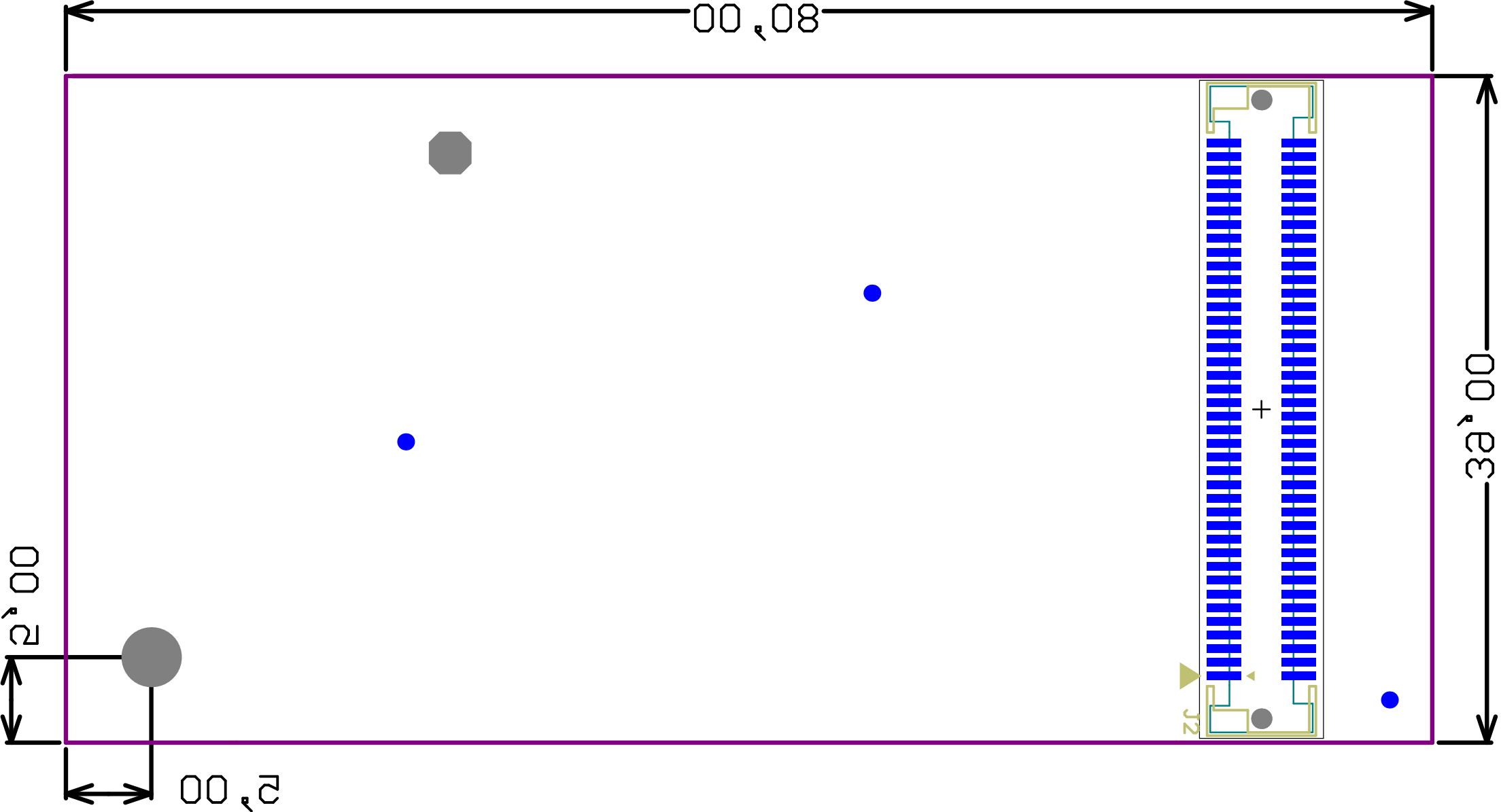
Min drilling diameter: 0.25mm

Min Annular ring: 0.125mm

Hole density < 1000/dm²

Surface finish: Ni/Au selective

Min milling tool diameter: NA



Board Edge

Test_Extension_SPI V1.0.0

Mechanical

Board thickness : 1.5mm

Copper finish: 35u

Min track width: 0.28mm

Min finished hole diameter: 0.15mm

Min drilling diameter: 0.25mm

Min Annular ring: 0.125mm

Hole density > 1000/dm

Min milling tool diameter: NA

Surface finish: NiAu selective

Bottom Overlay