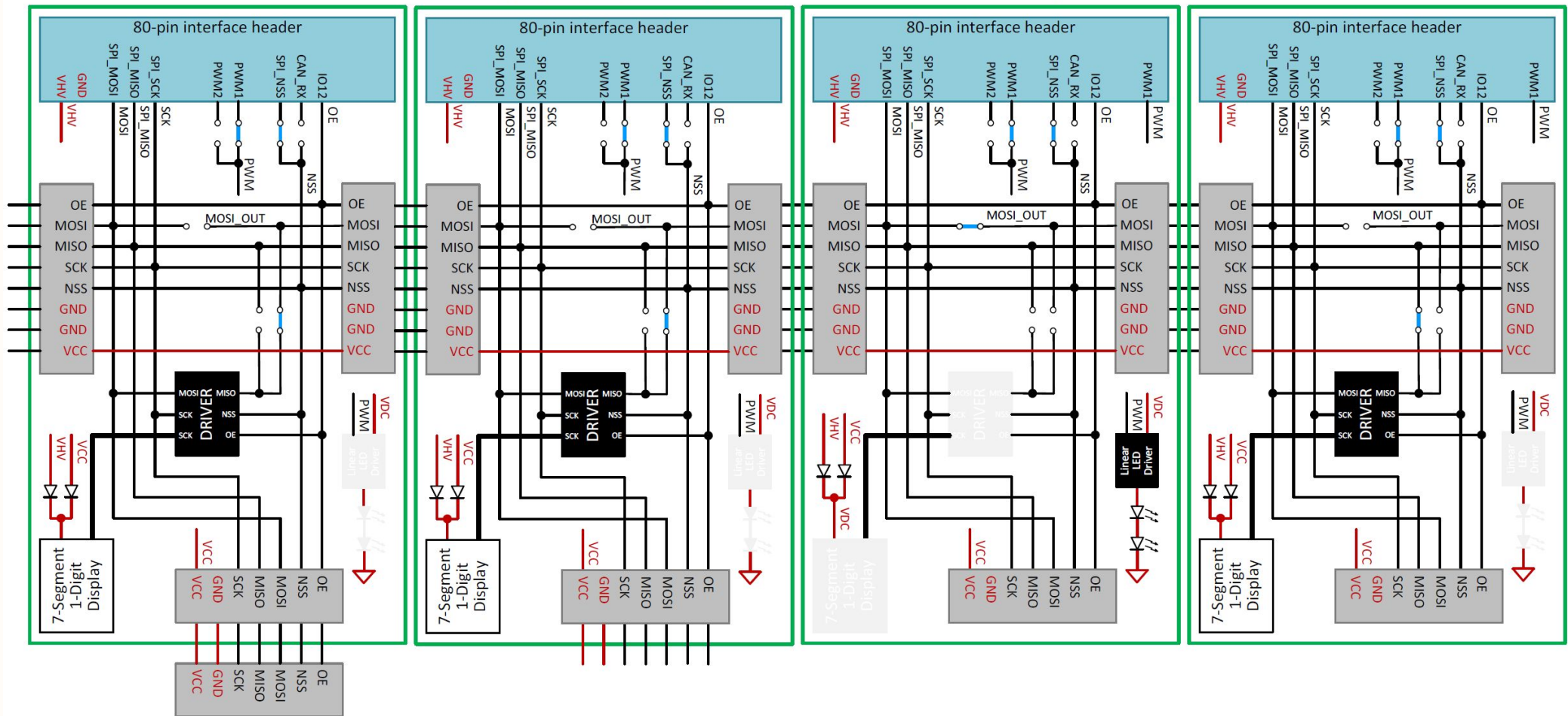


## Zest\_Display\_1-Digit – Configuration of the board in function of the operation



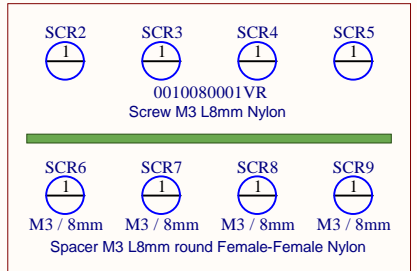
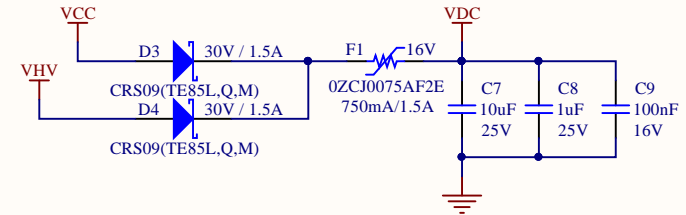
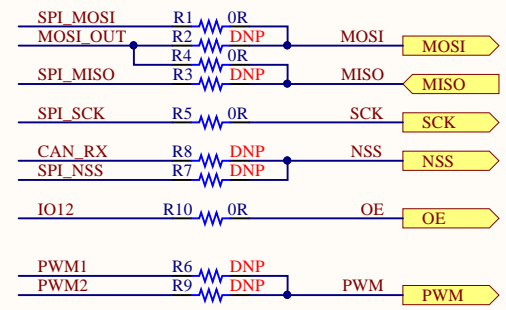
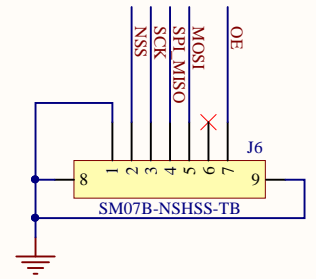
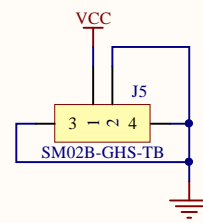
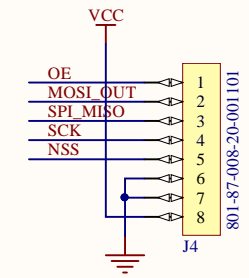
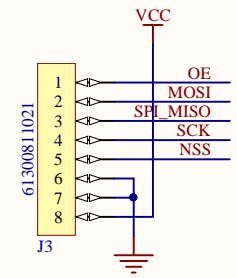
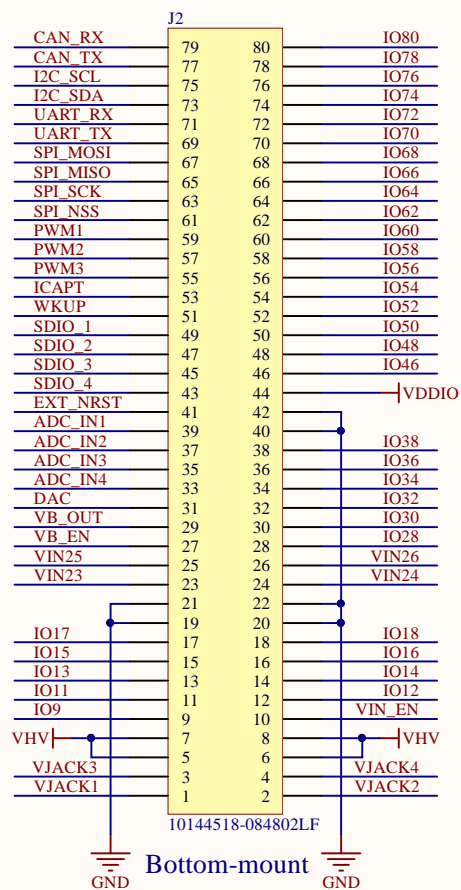
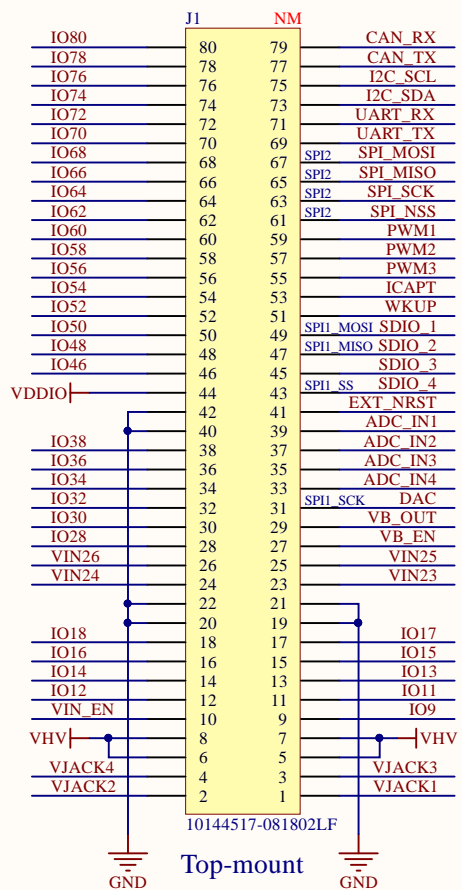
Standalone or first of a multi-digit chain.  
SPI control from 6TRON 80-Header or from the external header

Element of a multi-digit chain.  
SPI control from Previous board through the lateral 8-pin Header

2xLED version: the 7-Segment display + LED driver are not mounted. 2 x LEDs + a linear Led driver are mounted

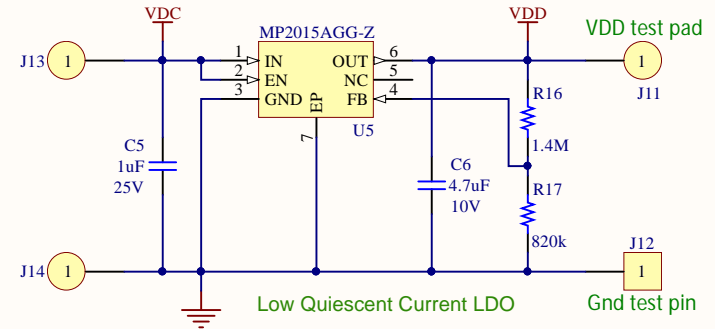
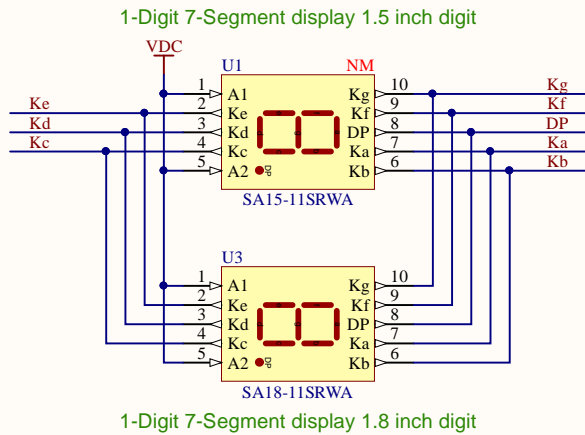
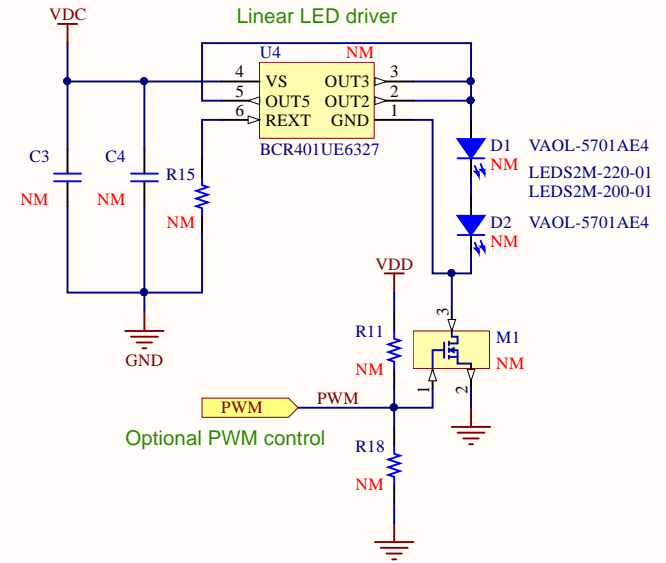
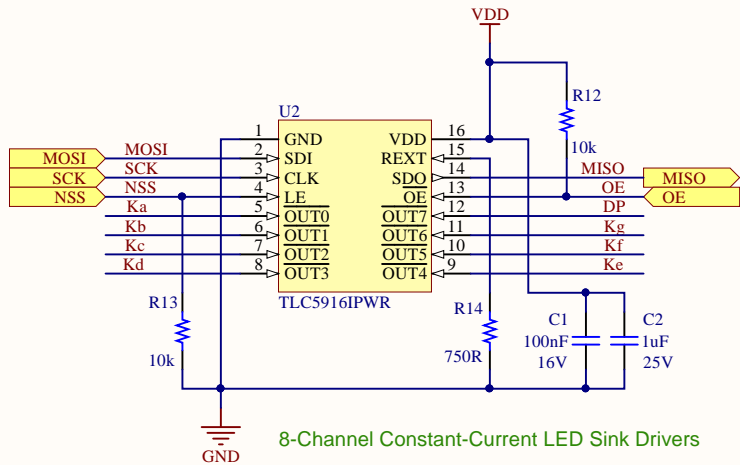
Last display digit in the chain. The MISO signal is looped back for reading LED driver status.

Title: <i>Configuration</i>	Version: <i>1.1.0</i>	
Board: <i>Zest_Display_1-Digit</i>	Size: <i>A4</i>	
Project: <i>6TRON</i>	Sheet: <i>1 of 3</i>	
Author: <i>Olivier Chevalerias</i>	Date modified: <i>23/11/2019</i>	



Title: <i>Interface</i>	Version: <i>1.1.0</i>
Board: <i>Zest_Display_1-Digit</i>	Size: <i>A4</i>
Project: <i>6TRON</i>	Sheet: <i>2 of 3</i>
Author: <i>Olivier Chevalerias</i>	Date modified: <i>23/11/2019</i>





Title: Control	Version: 1.1.0	
Board: Zest_Display_1-Digit	Size: A4	
Project: 6TRON	Sheet: 3 of 3	
Author: Olivier Chevalerias	Date modified: 23/11/2019	

