

Top Overlay

Zest\_Power\_12-48V-to-10V v1.0.0

Board Edge

Mecanical

Nbr Layers: 4

Copper finish: 35u

Min track width/clearance: 0.20mm

Min finished hole diameter: 0.15mm

Min drilling diameter: 0.25mm

Min Annular ring: 0.125mm

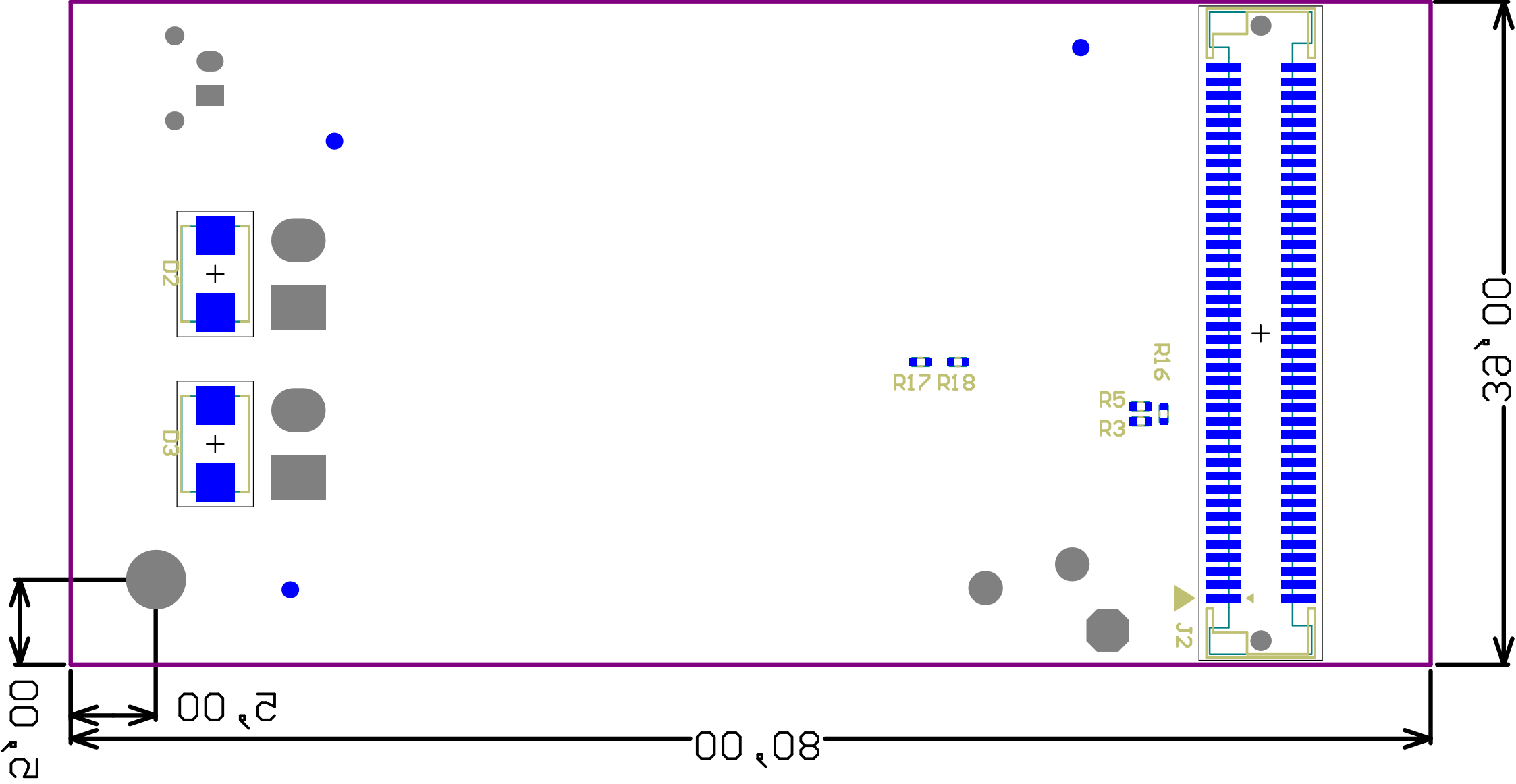
Hole density < 1000/dm<sup>2</sup>

Min milling tool diameter: 0.5mm

Soldermask: Blue

Surface finish: Ni/Au selective

Board thickness : 1.55mm



Board Edge

Zest\_Power\_12-48V-to-10V v1.0.0

Mechanical

- Soldermask: Blue
- Min milling tool diameter: 0.5mm
- Hole density > 1000/dm<sup>2</sup>
- Min Annular ring: 0.125mm
- Min drilling diameter: 0.25mm
- Min finished hole diameter: 0.15mm
- Min track width/clearance: 0.20mm
- Copper finish: 35u
- Nbr Layers: 4

Surface finish: NiAu selective

Board thickness : 1.5mm

Bottom Overlay