

Top Overlay

Zest\_Extension\_SPI

V1.1.0

Board Edge

Mecanical

Board thickness : 1.55mm

Nbr Layers: 4

Copper finish: 35u

Min track width: 0.28mm

Min finished hole diameter: 0.15mm

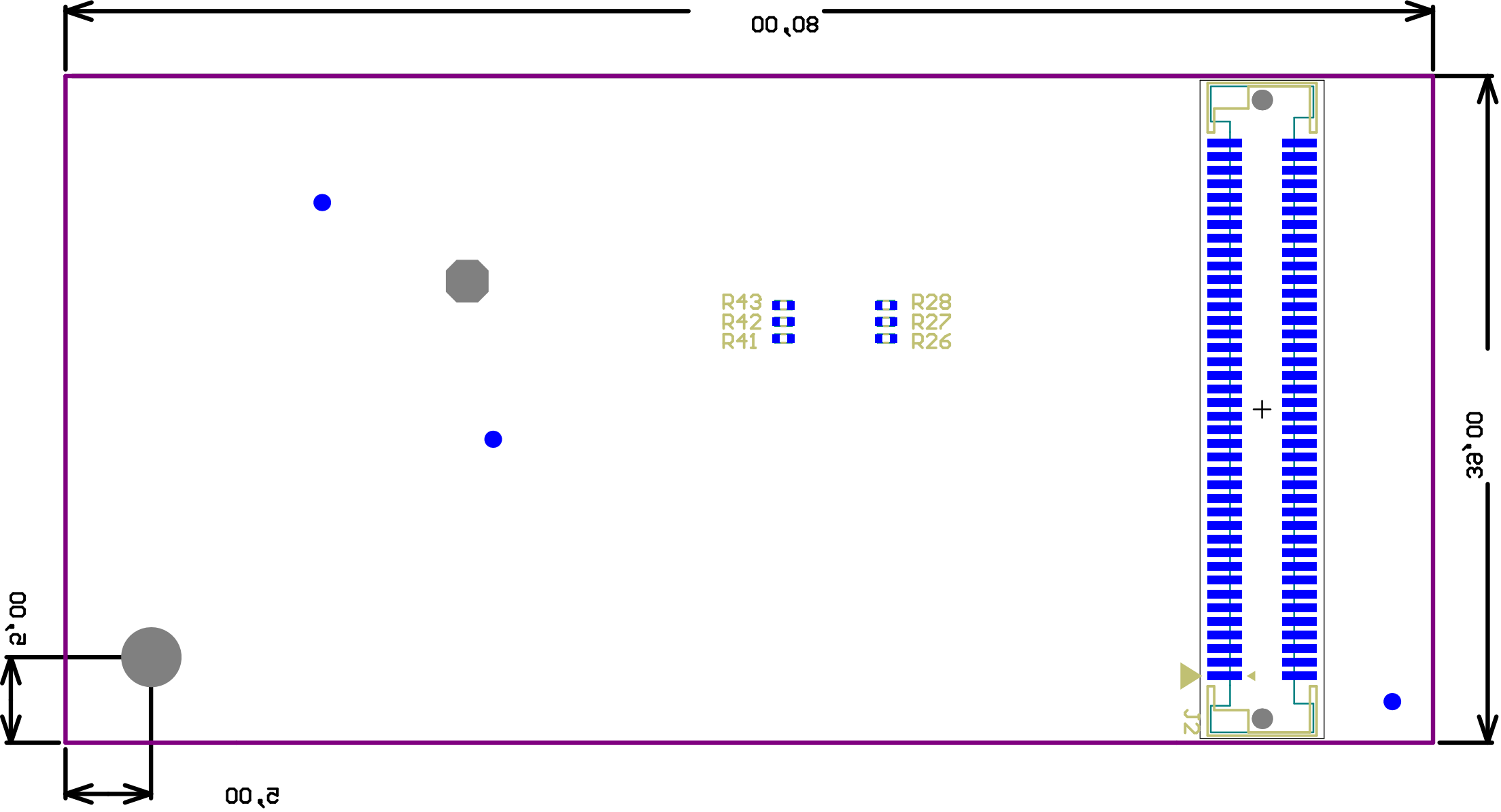
Min drilling diameter: 0.25mm

Min Annular ring: 0.125mm

Hole density < 1000/dm<sup>2</sup>

Surface finish: Ni/Au selective

Min milling tool diameter: NA



Board Edge

Test\_Extension\_SPI V1.1.0

Mechanical

Board thickness : 1.5mm Nbr Layers : 4

Copper finish: 35u

Min track width: 0.28mm

Min finished hole diameter: 0.15mm

Min drilling diameter: 0.25mm

Min Annular ring: 0.125mm

Hole density > 1000/bm

Min milling tool diameter: NA

Surface finish: NiAu selective

Bottom Overlay