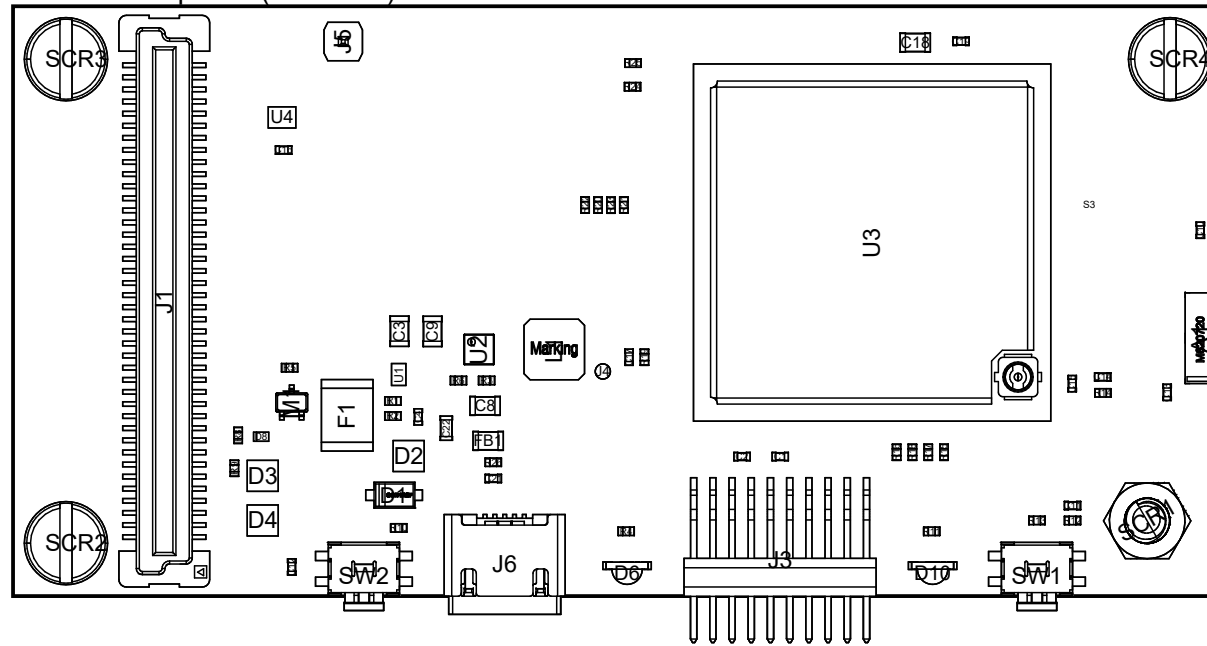



View from Top side (Scale 2:1)



Title: <i>Assembly Drawing</i>	Version: <i>1.0.0</i>	
Board: <i>Zest_Core_MTXDOT</i>	Size: <i>A4</i>	
Project: <i>6TRON</i>	Sheet: <i>1 of 2</i>	
Author: <i>SGA</i>	Date: <i>02/04/2020</i>	

A

B

C

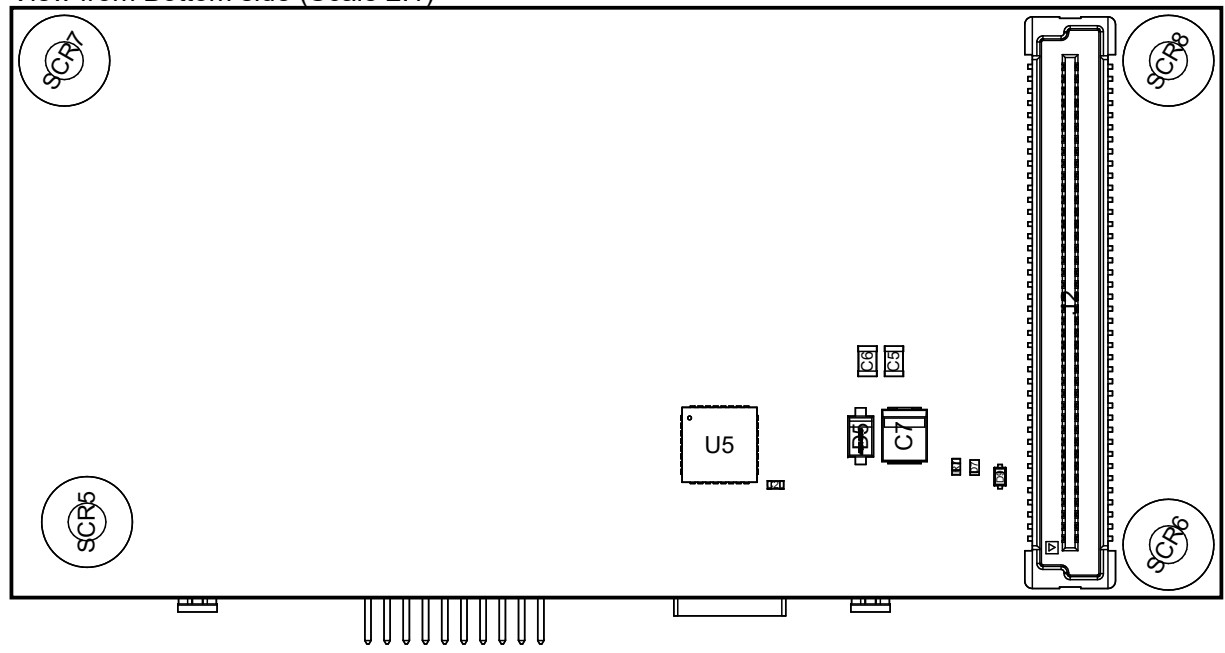
D

E

1

1

View from Bottom side (Scale 2:1)



2


2

3

3

4

4

Title: <i>Assembly Drawing</i>	Version: <i>1.0.0</i>	 CATIE
Board: <i>Zest_Core_MTXDOT</i>	Size: <i>A4</i>	
Project: <i>6TRON</i>	Sheet: <i>2 of 2</i>	
Author: <i>SGA</i>	Date: <i>02/04/2020</i>	

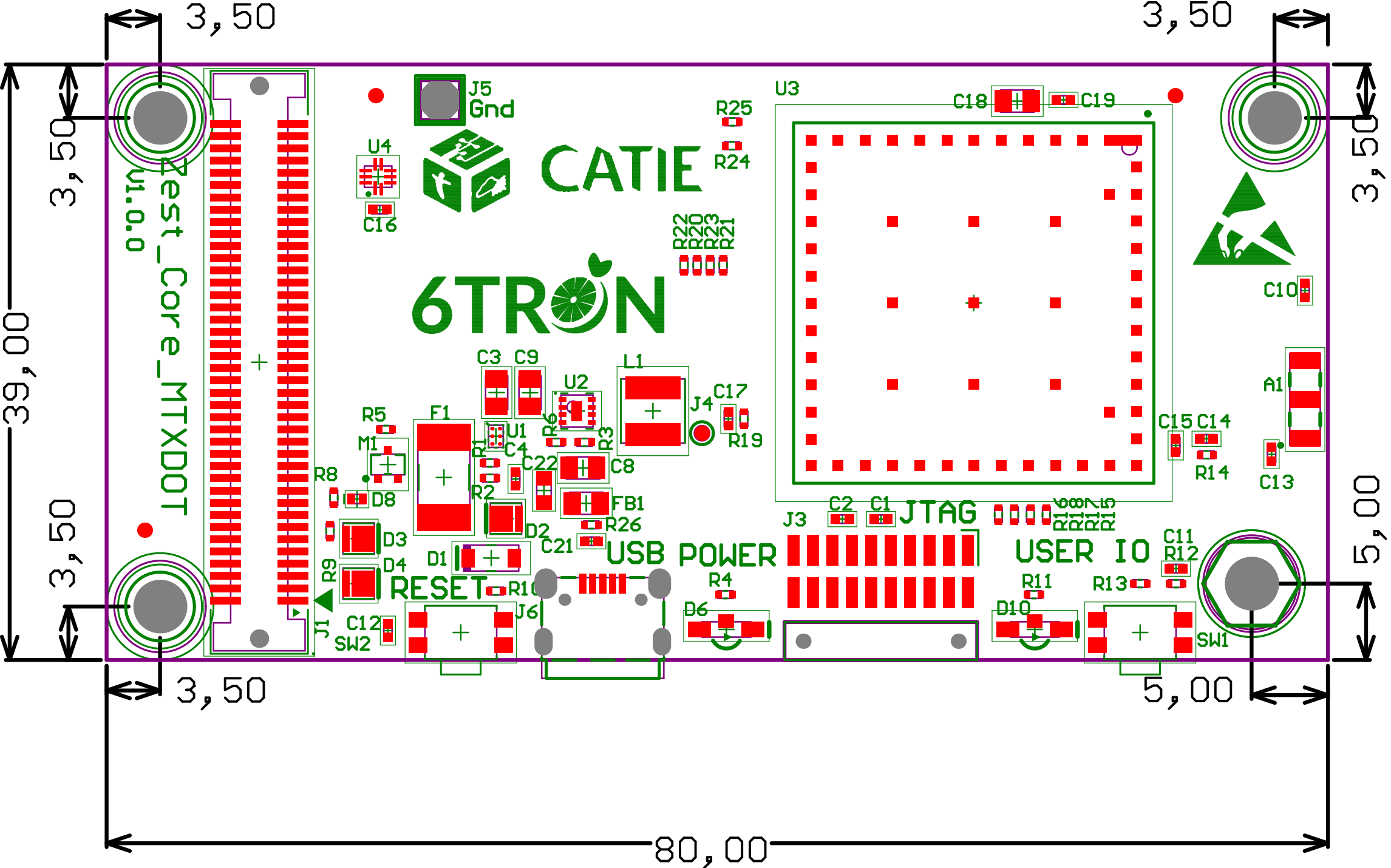
A

B

C

D

E



Top Overlay

Zest_Core_MTXDOT V1.0.0

Board Edge

Mecanical

Board thickness : 1.55mm

Nbr Layers: 4

Copper finish: 35u

Min track width/clearance: 0.10mm

Min finished hole diameter: 0.15mm

Min drilling diameter: 0.25mm

Min Annular ring: 0.125mm

Hole density < 1500/dm²

Min milling tool diameter: 0.5mm

Surface finish: Ni/Au selective

Board Edge

Zest_Core_MTXDOT V1.0.0

Mechanical

Board thickness : 1.5mm

Copper finish: 35u

Min track width/clearance: 0.10mm

Min finished hole diameter: 0.12mm

Min drilling diameter: 0.25mm

Min Annular ring: 0.125mm

Hole density > 1500/dm²

Min milling tool diameter: 0.2mm

Surface finish: NiAu selective

Bottom Overlay

